

# HEADQUARTERS



RESIN FLOORING  
FOR HEADQUARTERS & OFFICES

**Prima**  
PAVIMENTI SPECIALI





Project: Nike European HQ - Hilversum (NL)



## WHERE

- HEADQUARTERS
- PUBLIC OFFICES
- CORPORATE OFFICES
- COWORKING AREAS
- REPRESENTATIVE OFFICES
- OPEN OFFICES



## BENEFITS

- DURABLE CONTINUOUS SURFACES
- NON-SLIP SURFACES
- SOUND ABSORPTION
- ANTISTATIC PROTECTION
- CERTIFIED SOLUTIONS
- SAFE AND SANITIZABLE
- ECO-SUSTAINABLE
- DESIGN AND CUSTOMIZATION

## DESIGN STAGE

The requirements imposed on a flooring system depend on the purpose of the building and its areas, such as reception, common spaces, offices, data centres, stairs or technical rooms.

Our approach consists in supporting professionals throughout all decision-making phases, from planning to construction, informing about a wide range of possibilities and identifying technical solutions which are most suitable for project requirements.

This way allows realizing the most performing floorings for each environment, whether new construction, renovation or modernisation.

## HEADQUARTERS



ACQUIRED **KNOW-HOW** IS EXPRESSED  
IN THE **EFFECTIVENESS**  
OF THE PROPOSED **SOLUTIONS**

## SAFE AND LASTING CHOICES

### FUNCTIONALITY AND DETAILS

Jointless surfaces, resistant to intense pedestrian traffic. In addition to aesthetics and customisation, key features include waterproofing, sound absorption and foot traffic resistance, abrasion and trolley resistance, dust resistance.

### EASY MAINTENANCE

With continuous surfaces and resin coatings, maintenance is minimal and cleaning is easier, saving time and money. We suggest professional cleaners for cleaning resin coatings (as PrimaFloor Cleaner®), which help to prolong the life of the floor.

### SAFETY

Floors designed to prevent accidents, non-slip, tactile paths for the visually impaired.

### GUARANTEES

We are structured to be with the customer every step of the way, from design to delivery, to provide targeted solutions to meet project requirements.

### DURABILITY

High levels of UV resistance and color stability for a long service life and low maintenance costs. Long-lasting coatings that resist deterioration and loss of performance.

### COMFORT

Integrated solutions to help reduce walking noise. Underfloor heating compatible solutions.

### DESIGN

A wide range of floor and wall finishes, effects and colors for any environment, with extensive customisation options.

### SHORT INSTALLATION TIME

Very fast installation time, application on existing floors with considerable time and cost savings.

### EXPERIENCE

For over 40 years we have been dealing with the flooring of reference companies in every sector.

### SUSTAINABILITY

We use solutions that meet the highest standards of health and well-being. All floor coverings are low emission (VOC free) and meet the stringent parameters of the German AgBB standard.

### LEED

The resin system or polyurethane cement coating used includes a LEED® information statement detailing how it can contribute to the building's LEED credits.



**QUALITY IS VISIBLE**  
AND 100% **CERTIFIED**



# SOLUTIONS WORKPLACE AREAS

## REFURBISHMENT WITHOUT TOTAL DEMOLITION

RECEPTION AREA  
EXECUTIVE OFFICES  
STANDARD OFFICES  
OPEN OFFICES  
COWORKING AREA  
MEETING AREA  
CONFERENCE ROOM  
BOARDROOM  
CORRIDORS, STAIRS  
CANTEEN  
TOILETS  
TECHNICAL ROOMS  
MULTI-STOREY CAR PARK  
OUTDOOR

In building refurbishment operations, we are at the service of real estate and direct customers who intend to start redevelopment or functional conversion of offices and public environments.

About flooring, we work with designers, technical management and the customer to enhance and reuse the building's heritage, proposing sustainable and customised solutions that ensure maximum performance and functionality.

Office floors must be durable, withstand wear and tear while maintaining their performance, provide excellent sound insulation and make a fundamental aesthetic contribution that, together with the furnishings, is one of the defining elements of the environment.

COMBINE DESIGN  
AND FUNCTIONALITY



## MULTI-LAYER EPOXY SYSTEM

Multi-layer epoxy coatings provide surfaces with sufficient thickness to mitigate the imperfections of the original floor and offer excellent resistance to mechanical and chemical loads. Several layers of resin are applied. Quarz sanding of each layer to ensure perfect adhesion between layers, maintaining anti-slip characteristics and improving mechanical strength. They can also be self-levelling.

## SELF-LEVELLING SOUND ABSORBING

Systems based on decorative aliphatic self-levelling polyurethane resins combine design with noise reduction. These are continuous, smooth-finish elastic flooring that reduces footfall noise by up to 20 decibels while offering numerous sustainability benefits: low material consumption, excellent expected service life and lower maintenance costs.

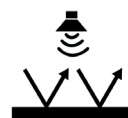
## DECORATIVE SYSTEM

Self-levelling cementitious mortars and pastes are cementitious-based coatings featured with a more textured and natural effect. They consist of special ultra-fast setting hydraulic binders to realize flooring and architectural elements, in thicknesses between 5 and 40 mm. They can be dry sanded, to obtain decorative floor coverings with matt or glossy finish, with natural effect, trowelled, cloudy, Venetian Terrazzo type.





Scratch  
and impact  
resistant



Acoustic  
comfort



Non-slip



Easy  
to clean



UV resistant

# HALL & RECEPTION, CORRIDORS

An innovative and specific proposal, where tones, linearity and outcome become vital material for the contemporary interior design, with an additional advantage: maximum reliability under all conditions. This is possible thanks to high-performance characteristics of mechanical and abrasion resistance realizing continuous and uninterrupted surfaces.

The reception and common areas must always be clean and welcoming to immediately communicate the identity of the entire structure.

Busy corridors in work environments require strong, durable floors that can withstand heavy traffic. Because of the proximity of private workspaces, floors can be chosen that are specifically designed to reduce noise.

As these are high-traffic areas, flooring solutions must be highly resistant and easy to clean and maintain.

## FEATURES

- Continuous surfaces
- Resistant to heavy traffic
- Scratch and impact resistant
- Non-slip
- Sound absorption
- Ease of cleaning and maintenance
- Customized design
- Variable thickness
- VOC free
- Fire reaction class Bfl-s1

## ACCESSORIES

- Tactile paths for the visually impaired
- Horizontal & vertical signage

## EPOXY MULTI-LAYER SYSTEM

## SELF-LEVELLING SOUND-ABSORBING

## DECORATIVE SYSTEMS

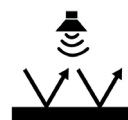
- > LOBBY
- > RECEPTION AND COMMON AREAS
- > CORRIDORS
- > STAIRS
- > WAITING ROOMS

HEADQUARTERS

**Prima**  
PAVIMENTI SPECIALI



Scratch  
and impact  
resistant



Acoustic  
comfort



Non-slip



Easy  
to clean



UV resistant

# EXECUTIVE OFFICES

These environments require excellent soundproofing, which reduces the noise transmission effect a heavy transit of people take place.

## FEATURES

- Continuous surfaces
- Resistant to heavy traffic
- Scratch and impact resistant
- Non-slip
- Sound absorbtion
- Ease of cleaning and maintenance
- Customized design
- Variable thickness
- VOC free
- Fire reaction class Bfl-s1

## ACCESSORIES

- Tactile paths for the visually impaire
- Horizontal & vertical signage

## EPOXY MULTI-LAYER SYSTEM

## SELF-LEVELLING SOUND-ABSORBING

## DECORATIVE SYSTEMS

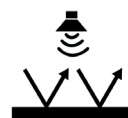
HEADQUARTERS

**Prima**  
PAVIMENTI SPECIALI





Scratch  
and impact  
resistant



Acoustic  
comfort



Non-slip



Easy  
to clean



UV resistant

# OPEN SPACE OFFICES

In the workplace it is essential to have interiors that can promote people's health and well-being. An open and innovative work environment offers an ecosystem of interconnected zones and settings, giving staff the ability to freely choose where and how to work. Customizable design where paths, colors, lines can be integrated effectively to indicate the purpose of each area and allow employees to easily find their way around the office.

These environments require excellent soundproofing, which reduces the noise transmission effect a heavy transit of people take place.

## FEATURES

- Continuous surfaces
- Resistant to heavy traffic
- Scratch and impact resistant
- Non-slip
- Sound absorption
- Ease of cleaning and maintenance
- Customized design
- Variable thickness
- VOC free
- Fire reaction class Bfl-s1

## ACCESSORIES

- Tactile paths for the visually impaired
- Horizontal & vertical signage

**EPOXY  
MULTI-LAYER  
SYSTEM**

**SELF-LEVELLING  
SOUND-ABSORBING**

**DECORATIVE  
SYSTEMS**

HEADQUARTERS

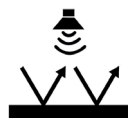
**Prima**  
PAVIMENTI SPECIALI



Project: meeting room Ferrari - Maranello (MO)- Italy



Scratch  
and impact  
resistant



Acoustic  
comfort



Non-slip



Easy  
to clean



UV resistant

# MEETING & CONFERENCE

## SELF-LEVELLING SOUND-ABSORBING

Flexible and innovative workspaces for events, meetings and gatherings. Environments for live events or equipped rooms for virtual meetings. Company boardrooms. Besides sound-absorbing, resistance and durability, everything is highly customizable by the use of colour and company logos.

Within the office, it is important to create a collaborative atmosphere that encourages concentration and cooperation between colleagues, and for the floor you can choose solutions with brighter or softer colours, with maximum customisation.

Systems based on self-leveling polyurethane resin for better comfort and sound absorption can be equipped with a flexible and elastic rubber granule carpet.

### FEATURES

- Continuous and jointless flooring
- High usage comfort
- Reduction of vertical sound transmission
- High impact force reduction capability
- UV resistant
- Elastic, soft and comfortable
- Wide range of colors
- Attractive aesthetic appearance, smooth surface
- Easy to clean and maintain
- Fire reaction class Bfl-s1
- VOC free

### ACCESSORIES

Tactile paths for the visually impaired

ADMINISTRATIVE OFFICES  
> WORKSPACES  
> FRONT & BACK OFFICE  
> MEETING ROOMS  
> CONFERENCE ROOMS

HEADQUARTERS

**Prima**  
PAVIMENTI SPECIALI





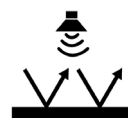
Project: Torre Allianz - Milano (Italy)



Project: Cité Musicale de l'Île Seguin Paris (France)



Scratch  
and impact  
resistant



Acoustic  
comfort



Non-slip



Easy  
to clean



UV resistant

# STAIRS

Stairs are a sensitive area that must meet specific safety parameters. The staircase flooring must withstand heavy traffic and provide a non-slip finish.

With epoxy systems with coloured dust-proof coating, it is possible to combine high resistance, safety and aesthetics, in compliance with fire regulations. Smooth and monochromatic effect, minimalist.

## FEATURES

- Non-slip
- Dust-proof
- Resistant to heavy traffic
- Sound Absorbing
- Variable thickness
- VOC free
- Fire reaction class Bfl-s1

## ACCESSORIES

- Tactile paths for the visually impaired
- Step guards: at right angles, rounded, in aluminium.

# DUSTPROOF PAINTING EPOXY SYSTEMS

# DECORATIVE SYSTEMS

HEADQUARTERS

**Prima**  
PAVIMENTI SPECIALI





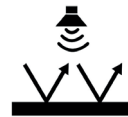
Project: Nike European HQ - Hilversum (NL)



Project: break room Amazon - Novara (Italy)



Scratch  
and impact  
resistant



Acoustic  
comfort



Non-slip



Easy  
to clean



UV resistant

# CANTEEN, RELAX AREA

## EPOXY MULTI-LAYER SYSTEM

## SELF-LEVELLING SOUND-ABSORBING

## DECORATIVE SYSTEMS

Canteens and relax areas are a meeting place for colleagues during work breaks. The floor must help to create a relaxing, comfortable and clean environment. Noise reduction and traffic resistance are essential requirements for the floor during lunch breaks.

As these are high traffic areas, the floors must also guarantee maximum resistance to wear and scratches caused by the movement of chairs and tables.

Continuous resin floors without or with a very small number of joints, are more resistant to oil and water, to impact and abrasion and, of course, easy to clean and decontaminate.

### FEATURES

- Continuous and jointless flooring
- Non-slip
- Sound Absorbing
- Waterproof
- Resistant to food and liquid stains
- Resistant to heavy traffic
- Scratch and impact resistant
- Easy cleaning and maintenance
- Design customization
- Variable thickness
- VOC free
- Fire reaction class Bfl-s1

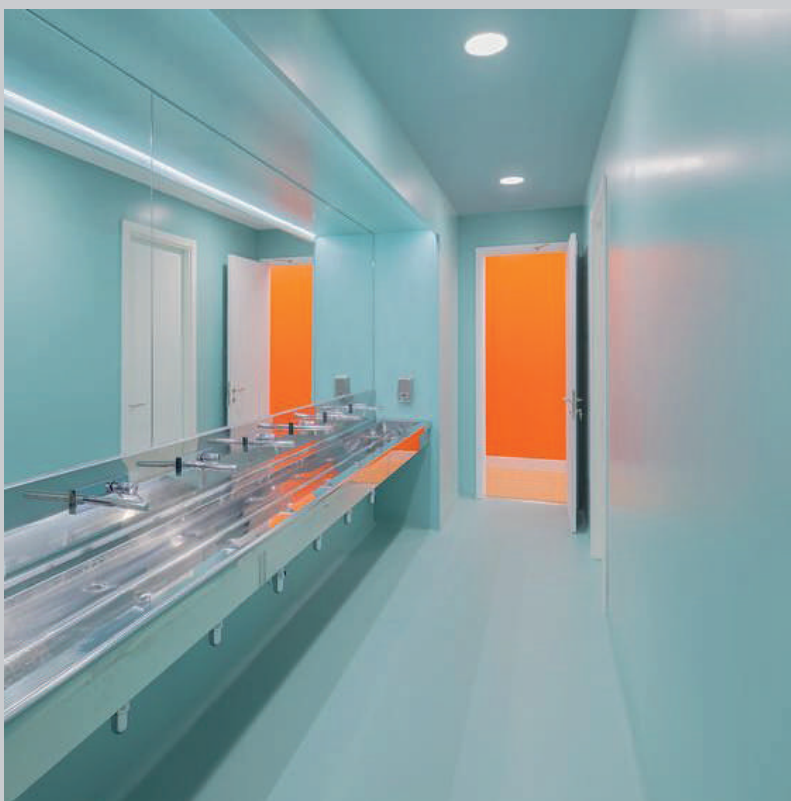
### ACCESSORIES

- Suitable also for vertical surfaces
- Connecting fillets between floor and wall
- Tactile paths for the visually impaired

HEADQUARTERS

**Prima**  
PAVIMENTI SPECIALI





Waterproof  
surfaces



Thermal shock  
resistance



Non-slip



High chemical  
resistance



Eco-Friendly



Easy  
to clean

# SANITARY FACILITIES

## NON-SLIP EPOXY MULTI-LAYER SYSTEM

A basic requirement for bathrooms and toilets is high slip resistance, maximum hygiene and resistance to frequent washing, as well as a long service life.

The continuous surfaces are waterproof and highly hygienic. The solutions proposed for floors are also applicable to walls.

### FEATURES

- Continuous and jointless flooring
- Non-slip
- Waterproof
- Scratch and impact resistant
- Easy cleaning and maintenance
- Design customization
- Variable thickness
- VOC free
- Fire reaction class Bfl-s1

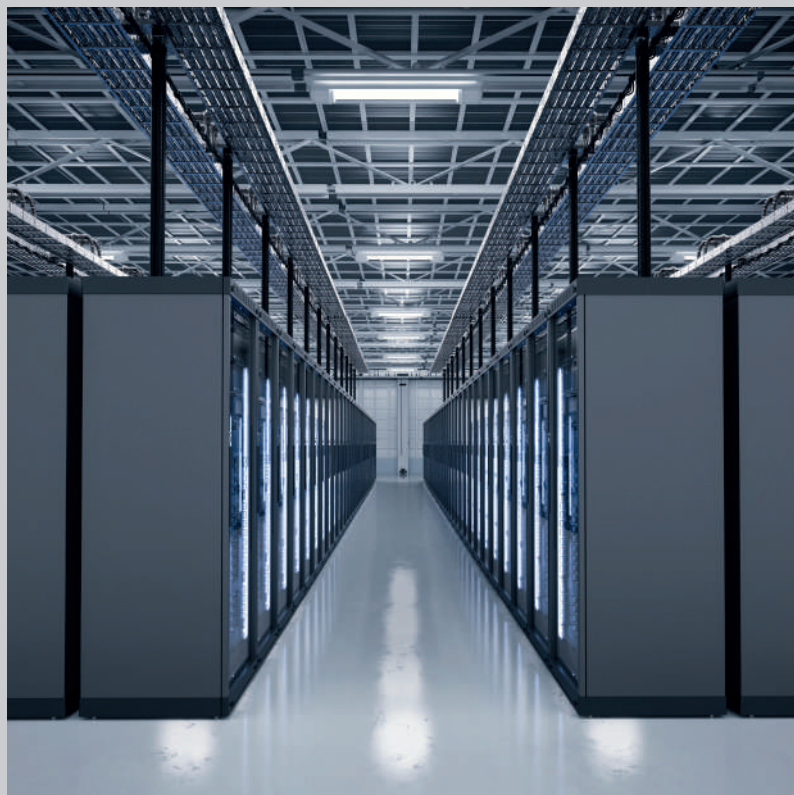
### ACCESSORIES

- Suitable also for vertical surfaces
- Connecting fillets between floor and wall
- Tactile paths for the visually impaired

HEADQUARTERS

**Prima**  
PAVIMENTI SPECIALI





Server room



Archive and technical rooms



Waterproof  
surfaces



High chemical  
resistance



Non-slip



High rolling  
resistance



Antistatic  
constraints



Easy  
to clean

# TECHNICAL ROOMS

For technical rooms like data centres, epoxy resin-based systems designed to respond to AST/ESD standards are suitable. They are ideal for environments where electro-static discharges protection is necessary.

## FEATURES

- High resistance to abrasion
- Resistant to heavy loads
- Conductive and static dissipative properties
- Permeable, no moisture rising damp if needed
- Easy to clean and low cost maintenance
- Variabile thickness from 2 to 4 mm
- Fire reaction class Bfl-s1

Requirements for basements and technical rooms flooring are mainly functional. As for any other structural element in contact with the ground, in these cases, the risk is exposure to external humidity. These rooms need a water-based epoxy resin coating.

Resin coatings must have high wear resistance and often protection from rising damp as underground floors.

## FEATURES

- High resistance to abrasion
- Resistant to heavy loads
- Conductive and static dissipative properties, if needed
- Permeable, no moisture rising damp
- Easy to clean and low cost maintenance
- Variabile thickness from 2 to 4 mm
- Fire reaction class Bfl-s1

## SELF-LEVELING ANTISTATIC

## MULTI-LAYERED VAPOUR PERMEABLE EPOXY SYSTEM

HEADQUARTERS

**Prima**  
PAVIMENTI SPECIALI





Scratch  
and impact  
resistant



Non-slip



Easy  
to clean



UV resistant

# HORIZONTAL SIGNAGE

A simple and well-organized signage is the key to a safer work environment. You can use corporate colors to define collection points, escape routes, how to reach parts of the building.

The signage made with polyurethane painting has excellent resistance to washing with common detergents.

## FEATURES

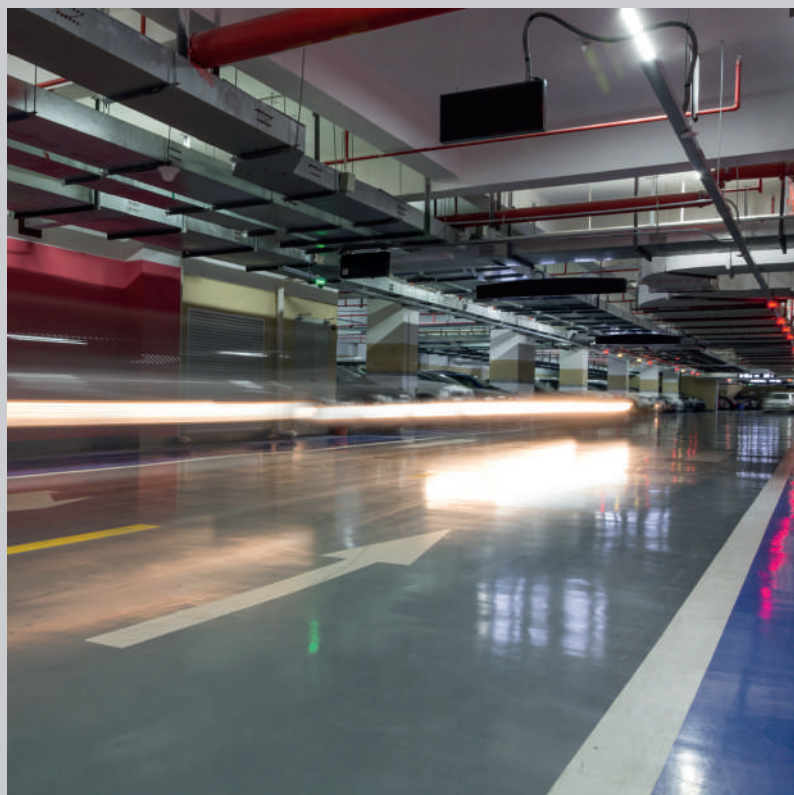
- Excellent adhesion to all surfaces
- Ideal in all areas, even in parking areas
- Ideal for an ever-changing business layout
- Scratch and impact resistant
- Quick and easy maintenance
- Not yellowing
- Also suitable for vertical surfaces

# POLIURETHANIC PAINTING

HEADQUARTERS

**Prima**  
PAVIMENTI SPECIALI





Resistant  
to heavy load



Non slip



High chemical  
resistance

# PARKING AREA

A parking space is not a must, but it is a worthy strong point for a building. Resin coatings are the most widely used and recommended for this type of surface as the resin itself has resistance, durability, and functionality. Multilayer epoxy or multilayer polyurethane systems can be used. OS8-OS9-OS10-OS11 criteria are satisfied. Colors, flooring, individual parking spaces, and signage can all be highly customized.

## FEATURES

Homogenous, non-slip surface  
Resistant to chemicals, oils, fuels, de-icing salts, lubricants, acids and diluted bases  
Wear-resistant and durable  
Resistant to wheeled vehicle traffic  
Highly customisable  
Underground car park  
These solutions contribute to the building's Leed score  
Fire reaction class Bfl-s1

## ACCESSORIES

Underground car park Horizontal and vertical signage  
Tactile pathways for the visually impaired

# MULTI-LAYER EPOXY SYSTEM

# POLIURETHANIC MULTI-LAYER

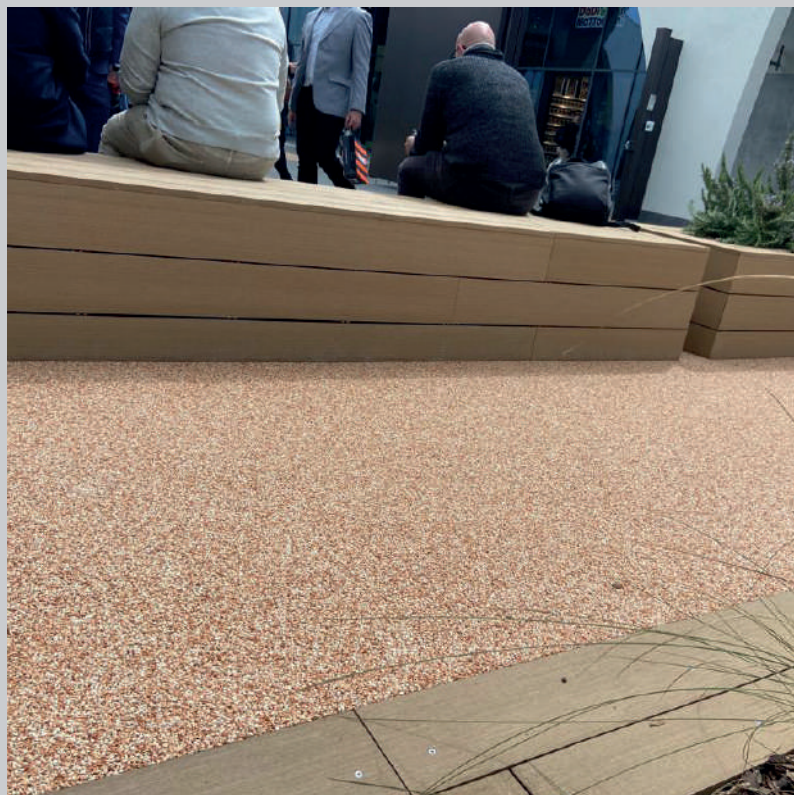
# DRY POLISHING SYSTEM

- > MULTI-STOREY CAR PARKS
- > UNDERGROUND PARKING
- > PARKING SPACES

HEADQUARTERS

**Prima**  
PAVIMENTI SPECIALI





Draining



Frost  
Resistant



Non-slip



Eco-Friendly

# OUTDOOR AREA

For the long lasting eco-friendly redevelopment of outdoor pedestrian or vehicular light areas,

Prima Drain Stone® is an outdoor flooring system totally permeable and environmentally friendly, complies to the hydrological cycle. It is essential to select certified materials that help to improve outdoor areas by ensuring drainage or rainwater filtering and avoiding the creation of new impermeable surfaces (such as asphalt and cement) and/or unstable ones (such as self-locking paving stones and loose gravel).

Composed of natural aggregates mainly from production waste, with different grain sizes, kinds and colors, blended with a special eco-friendly binder.

## FEATURES

- Permeable
- Sustainable
- Wide range of natural aggregates
- Customizable for inclusion
- UV resistant
- Head Island Effect
- Frost Resistant
- Short Installation time
- Easy cleaning and maintenance
- Respects the most important Minimum Ecological Criteria
- These solutions contribute to the building's Leed score

## ACCESSORIES

Tactile paths for the visually impaired

## PRIMA DRAIN STONE®

- > OUTDOOR AREAS
- > PEDESTRIAN PATHS GREEN AREAS
- > OUTDOOR RECEPTION AREAS
- > LANDSCAPE DESIGN
- > CYCLE PATHS

HEADQUARTERS

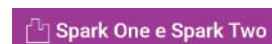
**Prima**  
PAVIMENTI SPECIALI



# CASE HISTORY

Our industrial know-how and expertise in this field, our partnerships as well as recognized qualities over the years, have allowed us to become a major player in this sector.

The best calling card is the flooring we have realised. In Italy, in Europe and, in the rest of the world.

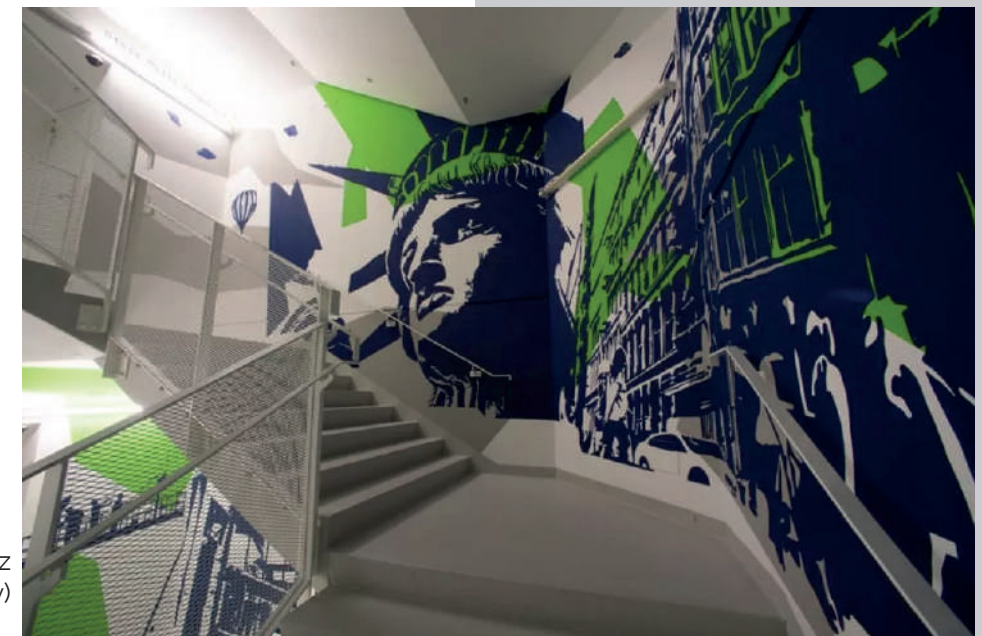


SOME OF  
OUR CUSTOMERS

Uffici Logistica Amazon  
Novara (Italy)



Torre Allianz  
Milano (Italy)



Nike European HQ  
Hilversum (NL)



HEADQUARTERS

# CONTACTS

## Milano - Operational HQ

Via Piemonte, 23/B  
20098 San Giuliano Milanese (MI)  
T +39 02.98282914

## Torino - Head office

Via Vittorio Amedeo II, 19  
10121 Torino  
T +39 011.0714790

[info@primapavimenti.it](mailto:info@primapavimenti.it)  
[www.primapavimenti.it](http://www.primapavimenti.it)

## Switzerland

Pavimenti Speciali Srl - Talenture S.A.  
Riva Albertolli 1  
6900 Lugano - Switzerland



**Whitelist**

Azienda impermeabile alla criminalità organizzata



OS 6 Class IV  
OS 26 Class IV  
OG 1 Class III  
OG 3 Class II



# PARTNERS

