

WINERIES



RESIN FLOORING
FOR WINERIES

Prima
PAVIMENTI SPECIALI



REGULATIONS

In terms of regulations, reference should be made to local health authority guidelines relating to places where food handling takes place. In addition, when designing a wine cellar, it is always necessary to refer to the general building regulations and the requirements of the workplace.

Local building regulations.
Local health regulations.
Local workplace regulations.

BENEFITS

HACCP CONTINUOUS SURFACES
ANTIMICROBIAL SURFACES ANTI-SLIP
SAFETY THERMAL RESISTANCE FIRE
RESISTANCE ABRASION RESISTANCE
CERTIFIED SOLUTIONS
ECO-SUSTAINABLE SOLUTIONS

DESIGN STAGE

In terms of flooring, the priority is to understand the functions that need to be considered when designing a wine cellar, with reference to the entire production cycle, to minimising biological contamination throughout the work process to proper product storage, including compliance with operators safety and security.

Our structured approach is based on over 40 years of experience in the flooring sector – certified sustainable solutions and the know-how of listening to our customers to always provide the right answer to every need.

ACQUIRED **KNOW-HOW** IS EXPRESSED
IN THE **EFFECTIVENESS**
OF THE PROPOSED **SOLUTIONS**

SAFE AND LASTING CHOICES

FLOOR EVALUATION

The overall floor structure and each of its components (foundations, subfloors, screeds, industrial floors, and finishes) are complementary and work together to provide the performance and durability required for the specific activity.

FEATURES AND DETAILS

Evaluating all aspects, whether complex sites or a single client, type of business and requirements.

COST EVALUATION

Preparation of surfaces before receiving a new resin coating.

Suitable resin solutions and performance.

Also: walls, drains, joints.

CHOICE OF RESIN COATING

A specific solution for each area of the plant. Certified systems. Resistance to contact with chemical, acidic or basic substances (such as vinegar, milk, oils, citric acid or caustic soda, blood, wine).

JOINTLESS SURFACES

Complies with the strictest HACCP standards, inhibiting bacterial growth and dirt accumulation.

GUARANTEES

Trustee applicator and durability warranties. The coating does not undergo any alterations, even in food processing areas.

LIFESPAN

The life expectancy of a surface finish is determined by a combination of mechanical, chemical, thermal shock, and wear stress. These stresses are typical and different for each environment. Durable flooring refers to flooring that lasts for a long time without deterioration or loss of performance.

SHORT INSTALLATION TIME

Very fast installation time, application on existing floors with considerable time and cost savings.

SUSTAINABILITY

We use solutions that meet the highest standards of health and well-being. All floor coverings are low emission (VOC free) and meet the stringent parameters of the German AgBB standard.

EXPERIENCE

For over 40 years, we have been in charge of the floors of the largest food&beverage industry in the country.

MAINTENANCE

Resin systems ensure durability and avoid high maintenance costs. Scheduled and targeted cleaning is required to maintain performance.

LEED

The resin system or polyurethane cement coating used includes a LEED® information statement detailing how it can contribute to the building's LEED credits.

QUALITY IS VISIBLE
AND 100% **CERTIFIED**

Project: Gaia - Trezzo Tinella (IT)



SOLUTIONS WINERIES AREAS

SAFETY AND HYGIENE CONSIDERATIONS

Surfaces must:

- Be resistant to spillage of raw materials and chemicals
- Be able to support raw materials and chemicals at temperatures of up to 100°C (212°F)
- Be able to be steam sterilised, if necessary, to prevent microbiological growth
- Must be slip resistant and safe
- Designed to facilitate gliding to drains
- Resistant to thermal shock
- Stain and dust resistant, non-toxic, biologically inert and odourless
- Resistant to mechanical wear, forklift lifting, abrasion and impact
- Easy cleaning and maintenance
- Be integrated with minimal seams and joints; coatings wrap around all surfaces
- Meet the standard aesthetic requirements of the food industry
- Comply with all major regulations and industry standards

CRUSHING AND DESTEMMING
FERMENTATION
MATURATION/AGING
BOTTLING
BOTTLE STORAGE
TASTING AREA
SHOWROOM AND SALES AREA
LOUNGE AREA, CAFETERIA
PARKING AREA
OUTDOOR

COMBINE
FUNCTIONALITY
AND DESIGN



Project: Distilleria Bonollo - Conselve (IT)

MULTI-LAYER EPOXY SYSTEM

Multi-layer epoxy coatings provide surfaces with sufficient thickness to mitigate the imperfections of the original floor and offer excellent resistance to mechanical and chemical loads. Several layers of resin are applied. Quarz sanding of each layer to ensure perfect adhesion between layers, maintaining anti-slip characteristics and improving mechanical strength. They can also be self-levelling

POLYURETHANE SYSTEM

Elastomeric polyurethane systems (also self-levelling) are widely used in environments where greater strength is required. They are made by applying several layers, based on two-component epoxy resin (possibly dusted with spherical quartz on refusal) or polyurethane resin. They are capable of bridging the cracks in the original surface, making it uniform and particularly resistant to impact, abrasion and chemicals.

DECORATIVE SYSTEM

Self-levelling cementitious mortars and pastes are cementitious-based coatings featured with a more textured and natural effect. They consist of special ultra-fast setting hydraulic binders to realize flooring and architectural elements, in thicknesses between 5 and 40 mm. They can be dry sanded, to obtain decorative floor coverings with matt or glossy finish, with natural effect, trowelled, cloudy, Venetian Terrazzo type.



Project: Donelli Vini - Gattico (IT)



Project: Distilleria Bonollo - Conselve (IT)



Impact
resistance



Resistant to
acids and oils



Non-slip



HACCP



Easy to clean

CERTIFIED SYSTEMS

Multi-layer resin floors are the ideal solution for those in search of a functional and durable floor covering. This coating guarantees excellent mechanical properties, durability and impermeability thanks to the overlapping of one or more resin layers. Multilayer epoxy resin floors are continuous (without joints) and therefore easy to clean.

They are non-slip, ensuring safety and stability and meeting current HACCP hygiene requirements. Variable thickness from 0.8 to 3.5 mm

FEATURES

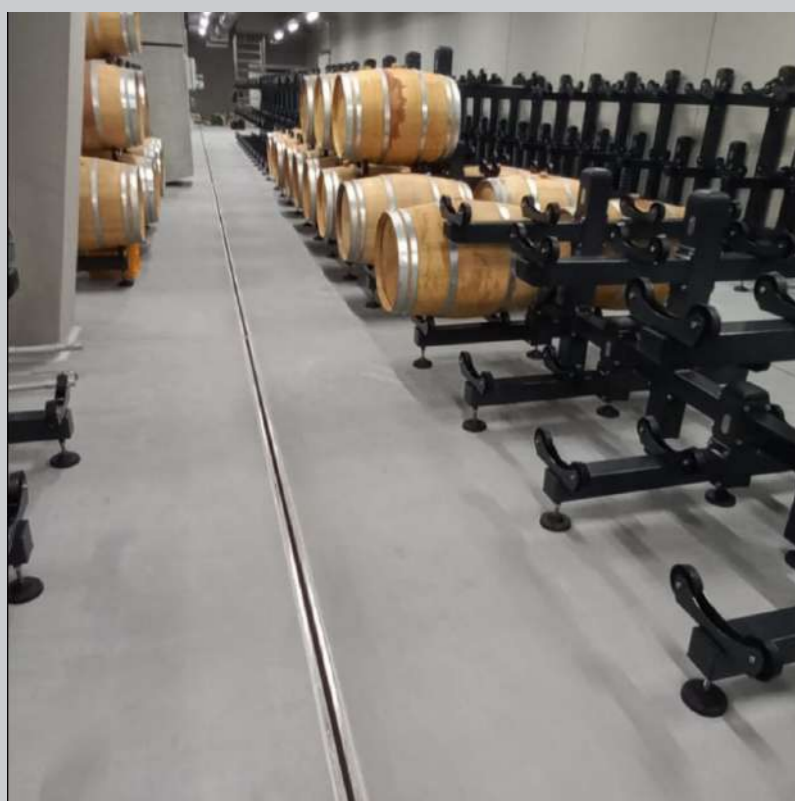
High Non-slip finish
It is characterised by its high resistance to wear and tear and abrasion caused by continuous pedestrian and vehicle traffic.
Resistant to most aggressive chemical products Resistant to frequent washing.
Easy to clean and sanitize
Suitable for use in mechanised warehouses.
Reduces the time required to carry out work so minimises production down times.

MULTI-LAYER EPOXY SYSTEM

- > BOTTLING ENVIRONMENTS WITH MECHANICAL AND CHEMICAL LOADS.
- > BOTTLE STORAGE AREAS
- > SHOWROOMS AND SALES

WINERIES

Prima
PAVIMENTI SPECIALI



Project: Cavallchina Vini - Sommacampagna (IT)



Antibacterial



Thermal shock
resistance



Non-slip



HACCP



High chemical
resistance

CERTIFIED SYSTEMS

Referring to the local health authorities, it is recommended to use a continuous floor in these environments, or at least a floor which is easy to wash and clean, in order to guarantee a sanitary and hygienic environment.

Polyurethane-cement coatings have greater resistance and durability due to the technical properties of polyurethane-cement, with thicknesses ranging from 4 to 12 mm.

FEATURES

Temperature resistance. The increased thickness protects the joint with the substrate from high stresses and thermal shocks (up to 130°C depending on thickness) and high temperature water washing with a hydro-cleaner.

High mechanical strength. Excellent abrasion resistance, better shock absorption.

High resistance to chemicals: from strong acids to alkalis, fats, oils and solvents and hydrocarbons that can damage other types of resin flooring, typical of the agri-food industry, the dairy industry, the wine industry and the petrochemical industry.

Very fast setting, even at low temperatures. Polyurethane cement floors are walkable after 8 hours, making them suitable for renovation and minimising downtime.

Very high standard of hygiene. Cleanliness is comparable to stainless steel and does not encourage biological growth. Safe for food and staff, highly slip resistant.

ACCESSORIES

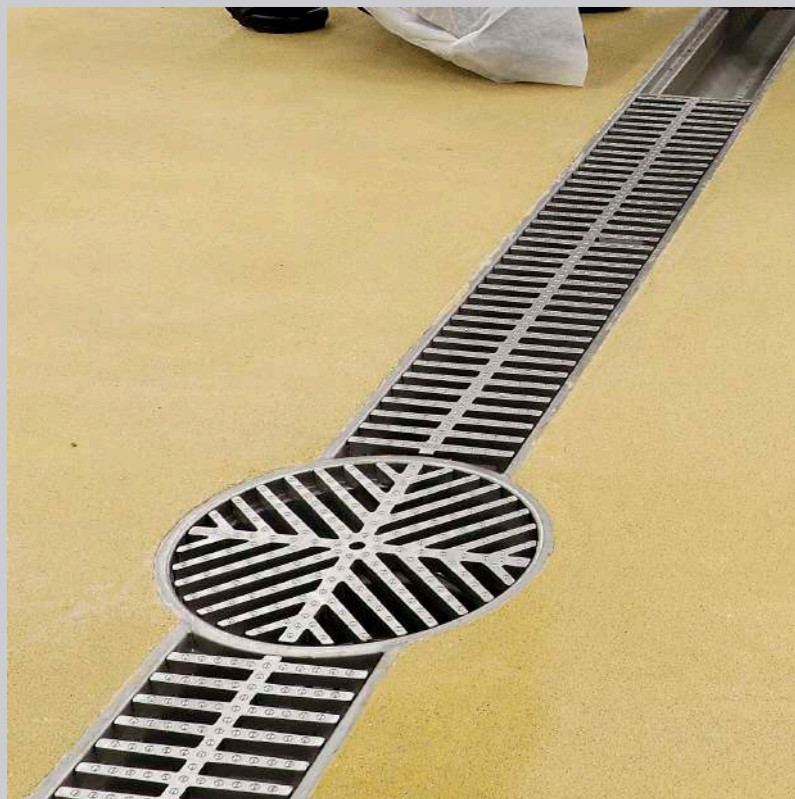
Liquid Drainage Channels

POLYURETHANE CEMENT MORTAR

- > ENVIRONMENTS OF FIRST RECEPTION
AND TREATMENT OF GRAPES
- > WINEMAKING AREAS WITH
MECHANICAL AND CHEMICAL LOADS
- > PRODUCTION AREAS WITH
THE PRESENCE OF HOT WATER AND STEAM
- > COLD ROOMS
- > AGING AREAS

WINERIES

Prima
PAVIMENTI SPECIALI



COMPLEMENTS

Resin based coatings integrate well with the accessories necessary to work correct and safe.

Food processing environments often have wet floors. These can be severely attacked by chemical and organic acids. To prevent the accumulation of dirt, bacteria and potentially contaminating processing residues, the design and installation of drains for the collection and removal of liquids is important.

In accordance with HACCP standards, a surface equipped with a drainage system helps to increase the level of hygiene and operator safety.

Fillets are floor-to-wall joints that ensure perfect hygienic continuity and an impermeable installation that prevents the accumulation of dirt and facilitates cleaning, as required by existing legislation.

Unlike other solutions using skirtings or separately glued skirting boards, fillets more effectively prevent dirt and bacteria from settling in the cracks between perimeter walls and the floor, making the flooring continuous and surfaces easier to clean.

Even if the walls do not come into direct contact with the food, it is still important that they are treated correctly to prevent the build-up of dirt and bacteria. Epoxy systems can also be applied in a vertical position and are easy to clean and disinfect.

DRAINAGE SYSTEMS

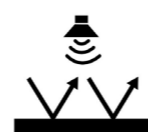
FILLETS

WINERIES

Prima
PAVIMENTI SPECIALI



Project: Gavioli Showroom- Nonantola (IT)



Acoustic
comfort



UV resistant



Non-slip



Eco-Friendly



Easy
cleaning

DEGUSTAZIONE E VENDITA

Designing a winery doesn't just mean managing the production stages, it also means providing spaces for visitors. Today, a winery must be equipped with representative rooms to receive and welcome visitors. All of this is in preparation for highlighting the characteristics of the landscape with which the cellar is associated and which, in turn, is a qualifying content of the wine produced: it is therefore necessary to imagine areas for tasting, for the direct sale of the product, for the organisation of special events or used as a small museum.

HACCP requirements must be implemented in all areas where food is handled and served, including tasting areas and cafeterias.

Continuous resin flooring with no or very few joints is impervious to grease, oil and water, more resistant to impact and abrasion and, of course, easy to clean and decontaminate. As these are high-traffic areas, the floors must also guarantee maximum resistance to wear and scratches caused by moving chairs and tables.

Also suitable for public sanitary facilities.

FEATURES

Wear resistance
Sound-absorbing. Absorption of noise or impact caused by falling objects
Easy to clean and sanitize, low maintenance
Safe for the environment and people
Dust proof
Long lasting
Decorative flooring with matt or glossy finish, natural effect, spatula, cloudy, Venetian terrazzo type.

ACCESSORIES

Resin wall coverings
Floor to wall junctions
Tactile paths for visually impaired people

MULTI-LAYER EPOXY SYSTEM

DECORATIVE SYSTEM

- > OFFICE PREMISES, OPEN SPACES
 - > BUSINESS CENTRES
 - > MEETING ROOMS
 - > HALL & RECEPTION
- > RELAXING AND COMMON AREAS
 - > TECHNICAL ROOMS
 - > ARCHIVE ROOMS
- > COMPANY CANTEENS
 - > CHANGING ROOMS
 - > SANITARY FACILITIES

WINERIES

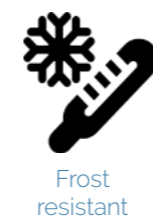
Prima
PAVIMENTI SPECIALI



Project: Wine & Food - Verduno (IT)



Pedestrian and driveway paths



PRIMA DRAIN STONE®

For the long lasting eco-friendly company redevelopment of outdoor pedestrian or vehicular light areas,

Prima Drain Stone® is an outdoor flooring system totally permeable and environmentally friendly, complies to the hydrological cycle.

It is essential to select certified materials that help to improve outdoor areas by ensuring drainage or rainwater filtering and avoiding the creation of new impermeable surfaces (such as asphalt and cement) and/or unstable ones (such as self-locking paving stones and loose gravel).

Composed of natural aggregates mainly from production waste, with different grain sizes, kinds and colors, blended with a special eco-friendly binder.

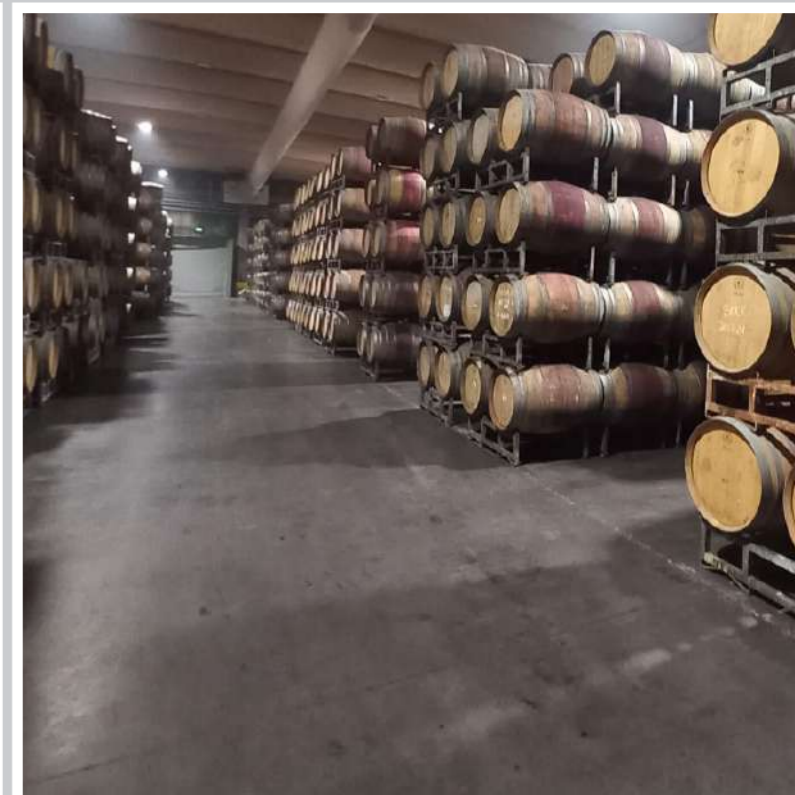
ACCESSORIES

Tactile paths for the visually impaired

OUTDOOR RESTYLING

WINERIES

Prima
PAVIMENTI SPECIALI



WINERIES

Prima
PAVIMENTI SPECIALI

CASE HISTORY

Our industrial know-how and expertise in this field, our partnerships as well as recognized qualities over the years, have allowed us to become a major player in this sector.

The best calling card is the flooring we have realised. In Italy, in Europe and, in the rest of the world.



Cantina San Patrignano
Coriano (IT)



Caviro
Savignano Sul Panaro (IT)

SOME OF
OUR CUSTOMERS

CONTACTS

Milano - Operational HQ

Via Piemonte, 23/B
20098 San Giuliano Milanese (MI)
T +39 02.98282914

Torino - Head Office

Via Vittorio Amedeo II, 19
10121 Torino
T +39 011.0714790

info@primapavimenti.it
www.primapavimenti.it

Switzerland

Pavimenti Speciali Srl - Talenture S.A.
Riva Albertolli 1
6900 Lugano - Switzerland



Whitelist
Azienda impermeabile alla criminalità organizzata



OS 6 Class IV
OS 26 Class IV
OG 1 Class I
OG 3 Class II



PARTNERS

