

# WOVEN FLOORING

BY DICKSON®





# WOVENFLOORING

BY DICKSON®

The Dickson Woven Flooring collection stands for expertise and attractive, innovative designs. Priding ourselves on our workmanship, we're convinced of the benefits of innovation and continuously drive the performance of our products.

Our Research & Development team achieves both simple, incremental improvements and revolutionary advances to best meet your needs. The launch today of our CleanGard - Integrated Protection technology - a new technically advanced product arriving at a critical juncture on the highly demanding woven flooring market - is one such example.

Pioneers of optimal protection, we're proud of our teams who have worked tirelessly for the last three years to bring you this varnish, allowing you to enjoy your product with confidence. Besides its acoustic insulation properties, dimensional stability and clean cut, Dickson woven flooring is now even easier to maintain, and this is just the beginning...

## CONTENTS

CleanGard : integrated protection varnish .....	4
The properties of our woven flooring .....	6
Environmental commitments .....	12
Design approach .....	14
Our ranges .....	16
Available formats .....	26
Floor configurator .....	27
Collection overview .....	28
Technical factsheet .....	30

# INNOVATION

## DICKSON: INTEGRATED VARNISH PIONEER

### WOVEN FLOORING THAT'S MORE **DIRT RESISTANT & EASIER TO CLEAN**

The CleanGard technology adds a varnished overlay to the woven surface, delaying its soiling while enhancing its stain resistance and ease of maintenance.

### OPTIMAL PROTECTION

The layer of varnish is integrated directly into the finished product, providing additional protection and ensuring that the material looks the same. CleanGard technology is odourless and contributes to a healthy interior.



#### THICKNESS

The product maintains its original performance including a total thickness of 4 mm, all layers combined



#### TRANSPARENCY

CleanGard technology does not affect the appearance of the product, which retains its attractive design



#### EASY MAINTENANCE

Much easier maintenance for less regular routine cleaning





# DICKSON WOVEN FLOORING

## THE LOOK AND FEEL OF TEXTILE WITH **TOTALLY UNIQUE PROPERTIES**

Woven from revolutionary fibres, Dickson® floor covering options combine the remarkable durability of vinyl with the aesthetic appeal and texture of traditional carpeting.

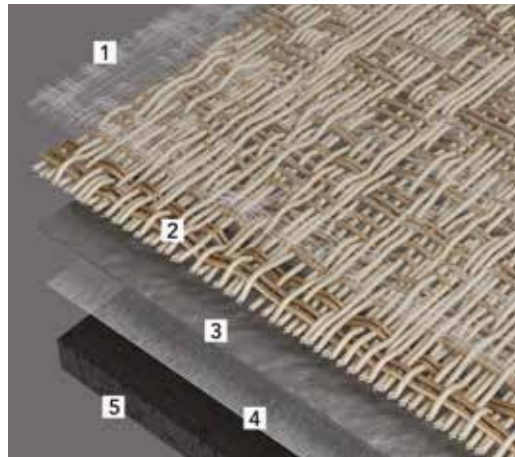
A truly innovative technology developed for the most demanding environments such as hotels, offices, stores and restaurants, Dickson flooring is durable, comfortable, attractive, and easy to maintain. This performance is further enhanced by CleanGard technology: a layer of varnish incorporated into the woven wear surface for added protection and easier cleaning.

### VARNISHED WOVEN WEAR SIDE



1. Varnished woven wear side

### HIGH-TECH BACKING



- 1. Varnished woven wear side
- 2. Monofilament polyester core
- 3. Very high density foam
- 4. Fibreglass layer
- 5. Acoustic foam





## GLOBALLY RECOGNIZED QUALITY

Crown jewel of the technical textile industry, Dickson is now recognized the world over as the benchmark for supreme quality indoor and outdoor French-made fabrics. Its products, marketed under two flagship brands, DICKSON® and SUNBRELLA®, are used by the top names in design, architecture and boating.

The group's main growth engine – innovation – enables Dickson to constantly provide a diverse array of products and a wide range of technical and designer textiles, all aimed at improving people's homes and work environments. The company currently provides solutions for four key markets: solar protection, outdoor living spaces, indoor and outdoor decoration, and boating equipment. A combination of technical expertise and creativity, the Dickson style shines in more than 110 countries on 5 continents.



M A D E       I N       F R A N C E

**DICKSON®**  
woven flooring

# COMFORTABLE & DURABLE

## FLOORS PLAY A KEY ROLE IN THE COMFORT OF A ROOM

To ensure optimum convenience and well-being, our R&D team has created ultra-smart flooring solutions using advanced technology: thermal and acoustic insulation, a non-slip surface that's comfortable to walk on...

## EXCEPTIONAL ACOUSTIC INSULATION CAPABILITIES

A leading-edge innovation, the SoundGuard® technology was specifically designed to improve comfort and noise absorption.

Dickson developed a high performance soundproof backing that effectively absorbs ambient noise and significantly reduces the transmission of impact noise.

**Acoustic comfort is truly essential to people's well-being and ideal for offices and hotels.**



### NON-SLIP SURFACE

The woven structure of Dickson® flooring naturally prevents slipping, making it particularly appropriate for public buildings where safety standards often determine the materials decorators can use.



### QUALITY THERMAL INSULATION

Good quality thermal insulation can dramatically improve the comfort of a room. Unlike hard flooring, Dickson® flooring offers warmth for greater well-being and energy savings.



### ANTISTATIC PROPERTIES

Formulated to minimize static electricity generated from walking on most carpeting, Dickson® flooring solutions provide effective protection against unpleasant shocks.



# DICKSON® FLOORING WAS DESIGNED FOR HEAVY COMMERCIAL USE AND RESIDENTIAL USE

Woven from revolutionary vinyl fibres and combined with a high performance backing, it is extremely tough-wearing.

An innovative textile solution at the leading edge of the hottest decorating trends, perfectly adapted to the most demanding environments in terms of practicality and durability.

## CLASSIFICATION FOR USE

To meet heavy use classification criteria, our flooring is subjected to standardized tests that reproduce the same tough conditions as the situations in which they are intended for.

The European standard establishes a classification system based on the level of wear and requirements imposed on the areas where each type of flooring will be used.



All our collections have been approved for **33-Heavy commercial traffic**.

**This is the highest classification for textile flooring.**



## FIREPROOF

Dickson® flooring has excellent flame resistance. Our products have been successfully tested and certified in accordance with European (EN 13501-1) and American (ASTM E 648) fire safety standards.



## WATERPROOF

Moisture is not a problem for Dickson® flooring. It is waterproof, rotproof and ultra-stable. It is perfectly suitable for wet areas.



## COLOURFAST

Even when exposed to intensive sunlight, Dickson® flooring retains its gorgeous original colours.

# EASY TO INSTALL & TO MAINTAIN

## DICKSON® WOVEN FLOORING IS FAST AND SIMPLE TO INSTALL ON ANY KIND OF SURFACE

Like any other flexible flooring, installation is done by gluing the material directly to any kind of flat, clean, dry, stiff surface. To save time and increase flexibility, you can also install the tiles with a non-permanent glue.

## THE FIRST WOVEN VINYL FLOORING ENSURING A CLEAN CUT

The FrayGuard® technology developed by Dickson minimizes the common phenomenon of fraying when cutting carpeting and boosts durability of the weave. It guarantees clean-cut edges for fast, efficient, impeccable installation.



**TILE**  
Dimensions :  
50x50 cm



**ROLL**  
Width : 2m



**SHAPE  
LAB**

DICKSON WOVEN FLOORING ALLOWS USERS TO ACHIEVE A CLASSIC LOOK OR CREATE ORIGINAL LAYING COMBINATIONS BY MIXING PRODUCTS TO CREATE RHYTHMS, PERSPECTIVES AND REFLECTIONS THAT TRANSFORM INTERIORS DEPENDING ON THE INTENSITY OF THE LIGHT.



**FRAYGUARD®**  
**CLEAN CUT**  
by **DICKSON®**

# CLEANGARD®

INTEGRATED PROTECTION

by DICKSON®



## STAIN RESISTANT

Dickson® flooring was designed to resist stains by not absorbing liquids and thus making spills quick and easy to clean.



## LOW MAINTENANCE

The product takes less time to clean and requires less regular routine maintenance. As with linoleum or tiling, basic cleaning can be done with a vacuum, broom and warm water mixed with a neutral detergent.



## SMART TIP

The colour of your flooring directly affects the maintenance requirements. Dirt and stains are less visible on chiné (marbled) shades than solid colours (whether light or dark). Depending on the location and the amount of traffic, this is an important aspect to consider when making your selection.

## A UNIQUE COMPOSITION FOR EXTREMELY DURABLE, EASY TO MAINTAIN FLOORING

Although the structure of the weave makes it appear to have a certain relief element, the exclusive assembly process used by Dickson guarantees it is absolutely waterproof, dustproof and stainproof. The warp and weft yarns are heat-sealed together and assembled to the backing while they are still hot and varnished.

Dickson® woven flooring ensures optimal quality sanitary conditions. Rotproof, antibacterial, and impervious to dust mites, mould spores and fungus, the impermeable surface is strengthened with an integrated overlayer of varnish to make the hygienic maintenance of floors easier and avoid hard-to-remove stains such as coffee, wine, fruit conserve and blood.



See our detailed recommendations for care and maintenance of our floor coverings at

[dickson-constant.com](http://dickson-constant.com)

**DICKSON®**  
woven flooring



# ENVIRONMENTALLY FRIENDLY

## AN ENVIRONMENTALLY FRIENDLY COMPANY

Well aware of the environmental stakes, Dickson launched a major campaign under the banner of its GreenOvation initiative. By optimising its energy management, minimising the use of chemical substances and obtaining the ISO 14001 (Environmental Management) - ISO 45001 (Health and Safety at work) - ISO 9001 (Quality Management) - ISO 50001 (Energy Management) certificates and the CAP 26000 (Social Responsibility) label, Dickson has clearly established its position as an eco-friendly business that cares about curbing its environmental footprint as much as possible.

## 0% PHTHALATE

To improve the well-being of users, air quality and indoor comfort, the woven upper layer of our Dickson floor coverings has always been phthalate-free.

As we believe quality materials play a vital role in their environment, the challenge presented by this new collection for our R&D department was to successfully produce flooring with 0% phthalate - including the bottom layer - and free from plasticizers.

This commitment to remove controversial substances from our new collection reflects Dickson's innovation approach to the environment and complies with European REACH standards.

## FLOORSCORE CERTIFICATION



Good indoor air quality is essential because people spend most of their lives indoors. The air we breathe affects both our health and our well-being, from minor disturbances, such as odours, skin and eye irritations, to the development or aggravation of more serious ailments, such as respiratory allergies.

Independently tested and certified by the Resilient Floor Covering Institute (RFCI), Dickson® flooring meets the official emissions criteria for volatile organic components (VOC) and is recognized as contributing to good indoor air quality.







Ecume J546 Mahogany, Allure J516 Ceramic Grey & Elégance J553 Pearl Brown









# A DESIGNER COLLECTION

Drawing on more than one hundred and eighty years of know-how and internationally renowned expertise, Dickson has developed a collection of woven flooring made using revolutionary fibers. The combination of warp and weft yarns on the wear side allows users to create different looks and color nuances for varying perspectives depending on the intensity of the light.

Thanks to a range of available shapes and a palette of unique colors, it has never been easier to create your own style and make your flooring the cornerstone of your decorative scheme in which the floor is the canvas on which you express your creativity and the flooring is a work of art.

## INSPIRED BY NATURE

# MIRAGE

## WOVEN FLOORING BY DICKSON

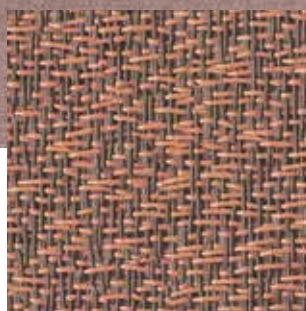
Mirage has a delicately uneven, raw and vibrant surface. A perfect balance between soft and intense, its natural-looking texture is inspired by sisal flooring. This range is available in a broad range of refined colors, from light to dark, with neutral tones complementing more fiery shades.



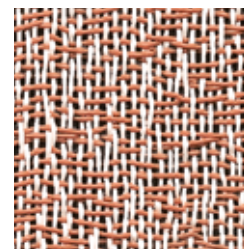
Pattern repeat: W 160 cm / 62.99\" x H 250 cm / 98.42\"



CHAMPAGNE BEIGE MIRA J527 D50  
 MIRA J527 200



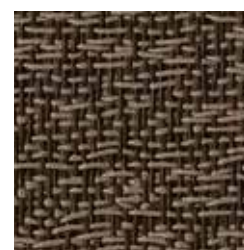
RANNOCH ROSE MIRA J550 D50  
 MIRA J550 200



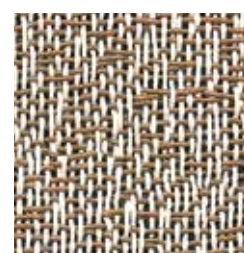
SERANDITE MIRA J561 D50  
 MIRA J561 200



NIMBUS BEIGE MIRA J522 D50  
 MIRA J522 200



ARIZONA BRONZE MIRA J526 D50  
 MIRA J526 200



SÉPIA MIRA J555 D50  
 MIRA J555 200

Rolls Mirage J527 Champagne Beige, rouleau Mirage J550 Rannoch Rose

Made to Order\*

Made to Order\*





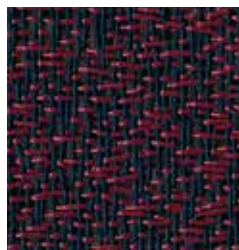
WILD  
EARTH

MIRA J525 D50  
MIRA J525 200



ANTRIM  
BLUE

MIRA J549 D50  
MIRA J549 200

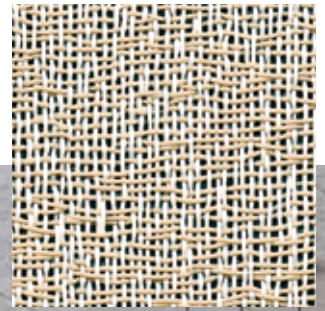


MERLOT  
RED

MIRA J529 D50  
MIRA J529 200

SHELL

MIRA J554 D50  
MIRA J554 200



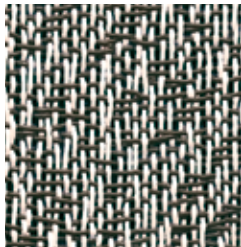
STORNAWAY  
SILVER

MIRA J524 D50  
MIRA J524 200



VIPER  
BLUE

MIRA J528 D50  
MIRA J528 200



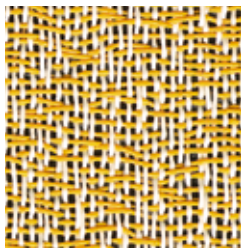
BETULA

MIRA J559 D50  
MIRA J559 200



DUSTY  
GREEN

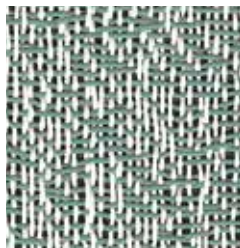
MIRA J548 D50  
MIRA J548 200



ORPIMENT

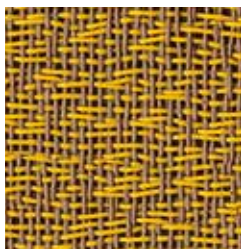
MIRA J560 D50  
MIRA J560 200

Made to Order\*



POLAR

MIRA J558 D50  
MIRA J558 200



PERSIAN  
YELLOW

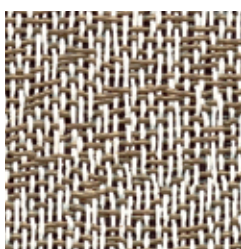
MIRA J547 D50  
MIRA J547 200

Made to Order\*



SILICON  
SILVER

MIRA J523 D50  
MIRA J523 200



UMBER

MIRA J556 D50  
MIRA J556 200



MOON

MIRA J557 D50  
MIRA J557 200

Hexagons Mirage J554 Shell



\* This colour is made to order - minimum of order 200 m<sup>2</sup>



# ALLURE

WOVEN FLOORING BY DICKSON

Allure has a delightfully colorful, grained texture. The grain is mostly dark, creating an interplay with the colorful base. The delicate tones subtly bring the surface to life. A few deeper touches accentuate the softness of this range with its fresh hues.



Pattern repeat: W 49.38 cm / 19.44\"/>



IRIDIUM SILVER

ALLU J514 D50  
ALLU J514 200

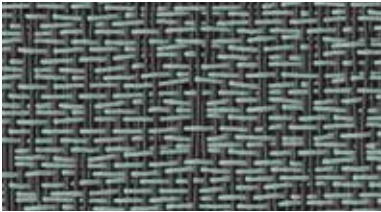


SNOW SHADOW

ALLU J517 D50  
ALLU J517 200



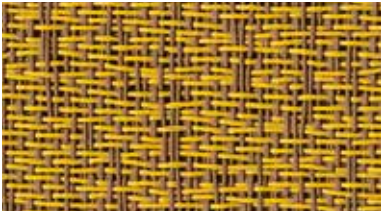
ZAFFRE BLUE    ALLU J515 D50  
ALLU J515 200



CELADON GREEN    ALLU J539 D50  
ALLU J539 200



CUMBERLAND BEIGE    ALLU J518 D50  
ALLU J518 200



YELLOW TAUPE    ALLU J541 D50  
ALLU J541 200

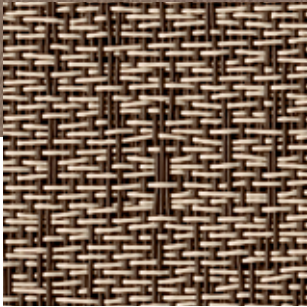


ORKNEY TAUPE    ALLU J540 D50  
ALLU J540 200



CALDERA ROSE    ALLU J542 D50  
ALLU J542 200

Tiles & XL tiles Allure J516 Ceramic Grey



CERAMIC GREY    ALLU J516 D50  
ALLU J516 200



# ÉCUME

WOVEN FLOORING BY DICKSON

Like froth or fluffy clouds blending harmoniously with another surface of nuanced shades, Écume has an elegant, contemporary pattern. Available in a range of deep, natural colors, its texture adapts to any room design.



50 x 50 cm  
19,69" x 19,69"

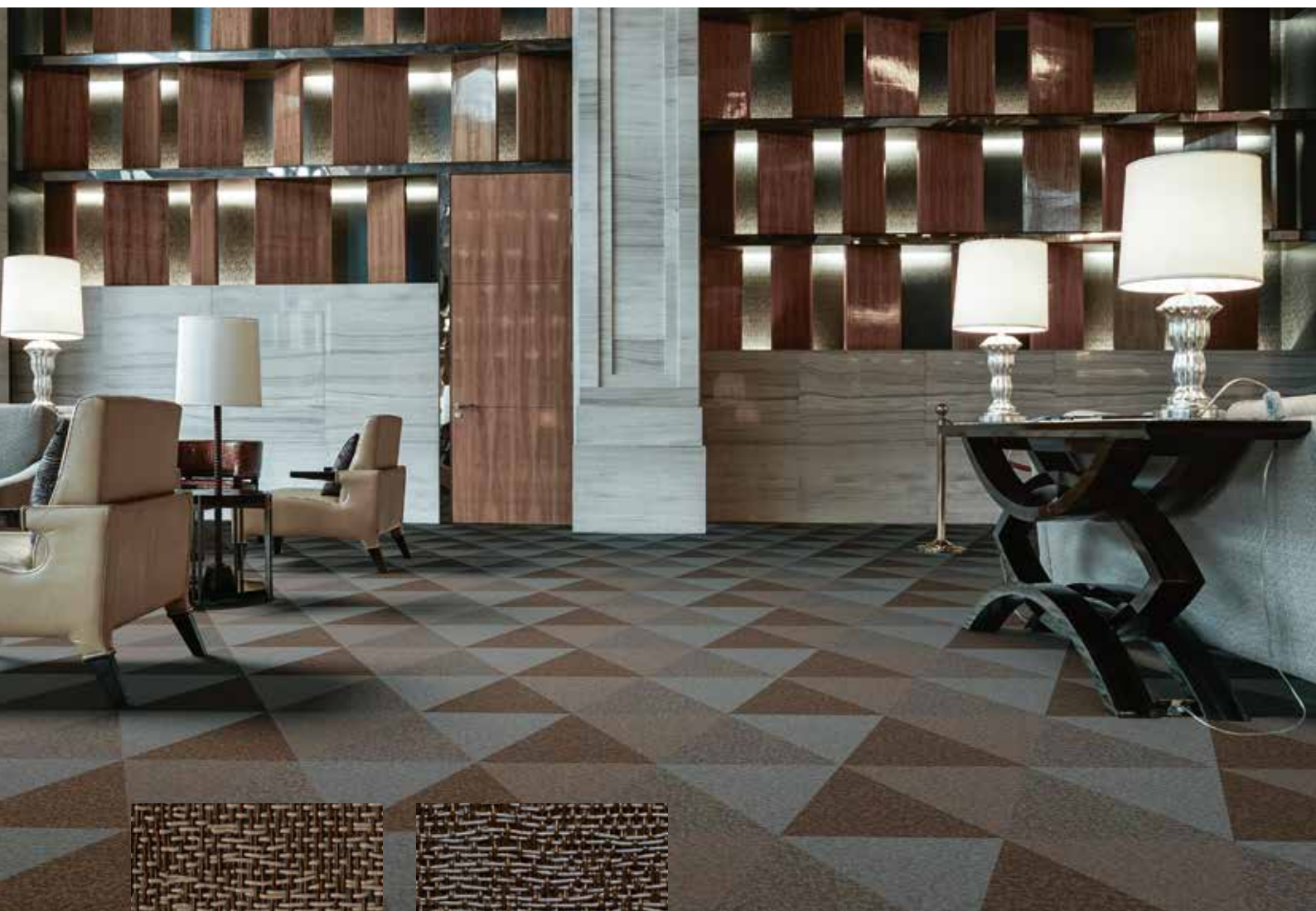


200 cm  
78,74"



SHAPE LAB

Pattern repeat: W 80 cm / 31.5" x H 78 cm / 30.71"



MAHOGANY

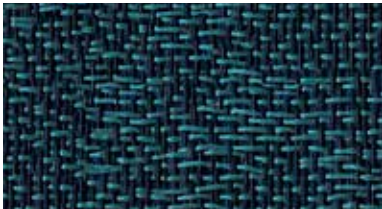
ECUM J546 D50  
ECUM J546 200



KOPI BRONZE

ECUM J520 D50  
ECUM J520 200

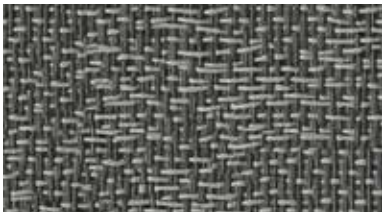




VERTIGO BLUE

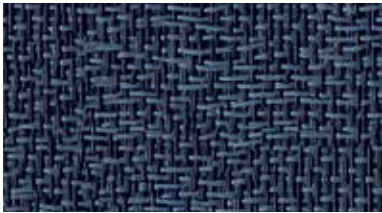
ECUM J543 D50  
ECUM J543 200

Made to Order\*



XENON GREY

ECUM J521 D50  
ECUM J521 200



DIAMOND BLUE

ECUM J544 D50  
ECUM J544 200

Made to Order\*

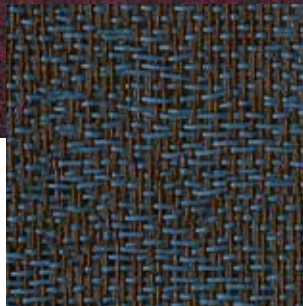
Rolls Ecume J545 Cheviot Red & J519 Bowland Blue



CHEVIOT RED

ECUM J545 D50  
ECUM J545 200

Made to Order\*



BOWLAND BLUE

ECUM J519 D50  
ECUM J519 200

\* This colour is made to order - minimum of order 200 m<sup>2</sup>

# ÉLÉGANCE

WOVEN FLOORING BY DICKSON

Élégance is a timeless basic with a soothing and discretely semi-plain texture that works in any environment. It is available in a neutral or subtly colorful palette that accents its timeless dimension. Élégance is a new generation of redesigned plains.

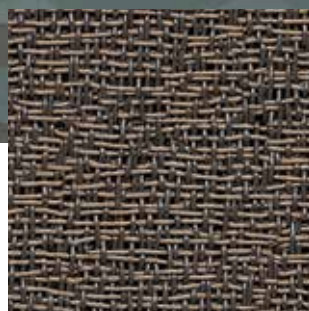


Pattern repeat: W 158 cm / 62.20" x H 250 cm / 98.42"



ARDEN GREEN

ELEG J530 D50  
ELEG J530 200



SMOKE

ELEG J531 D50  
ELEG J531 200

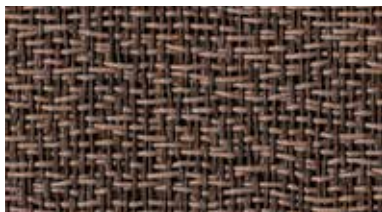




PACIFICA BLUE

ELEG J552 D50  
ELEG J552 200

Made to Order\*



PEARL BROWN

ELEG J553 D50  
ELEG J553 200

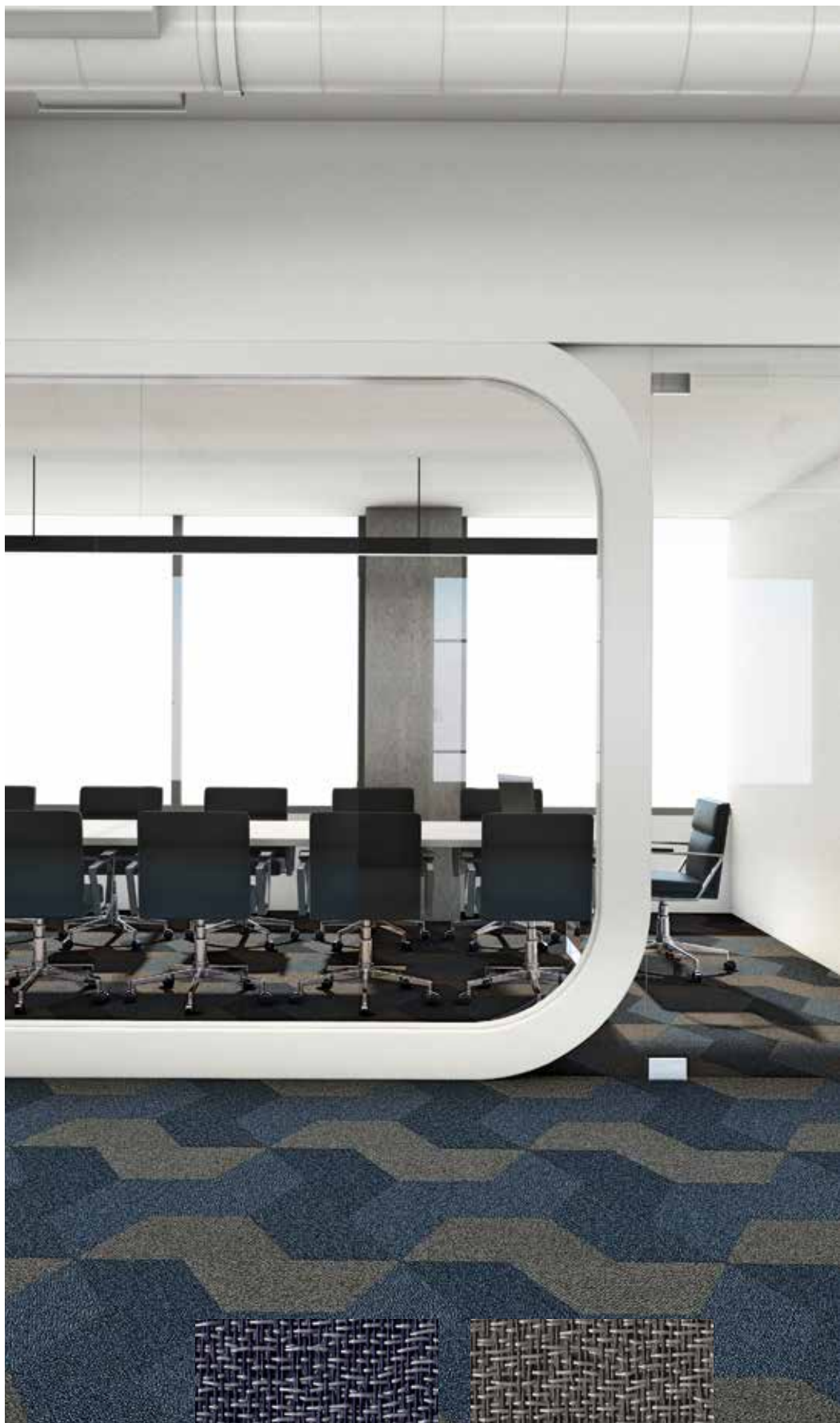


ALMOND GREEN

ELEG J551 D50  
ELEG J551 200

Made to Order\*

Half-hexagons Elegance J533 Islay Blue & J532 Stone



ISLAY BLUE

ELEG J533 D50  
ELEG J533 200



STONE

ELEG J532 D50  
ELEG J532 200

# EMPREINTE

## WOVEN FLOORING BY DICKSON

A harmonious weave with a resolutely modern motif for settings filled with emotion and bold, distinctive designs. This timeless range of classic neutrals comes in nuances of gray with deep and delicate hues.



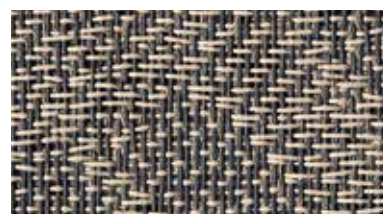
Pattern repeat: W 54.12 cm / 21.31' x H 90.67 cm / 35.70"



SELENE BRONZE

EMPR J536 D50  
EMPR J536 200

Made to Order\*



PENNINE GREY

EMPR J510 D50  
EMPR J510 200



TUNGSTEN SILVER

EMPR J509 D50  
EMPR J509 200



TITANIUM SILVER

EMPR J537 D50  
EMPR J537 200

Made to Order\*

Rolls Empreinte J536 Selene Bronze



# COSMOS

## WOVEN FLOORING BY DICKSON

Organic, astral and aquatic, the texture of Cosmos, scattered with lively shapes, moves in one direction, then another, to create a gentle, slightly wavy rhythm. Available in a basic range of naturally stylish neutral tones, this line produces a pleasant, delicate effect. This lively motif is a vision of perpetual motion.

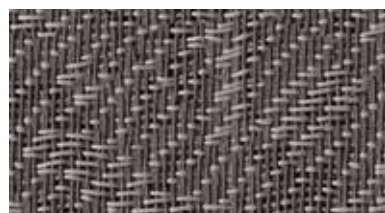


Pattern repeat: W 234 cm / 92.13' x H 379 cm / 149.21"



JET BLACK

COSM J511 D50  
COSM J511 200



SKY SILVER

COSM J513 D50  
COSM J513 200



STRONSAY BEIGE

COSM J538 D50  
COSM J538 200

Made to Order\*

Planks & tiles Cosmos J512 Marron Black



MARRON BLACK

COSM J512 D50  
COSM J512 200

\* This colour is made to order - minimum of order 200 m<sup>2</sup>

# SHAPE LAB

SHAPES MADE TO ORDER :

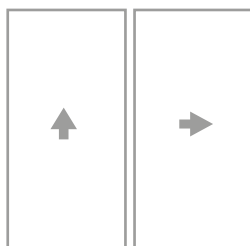
## COMBINABLE SHAPES



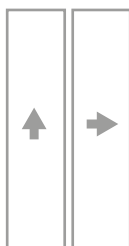
**XL TILES**  
100 X 100 cm / 39.37" X 39.37"



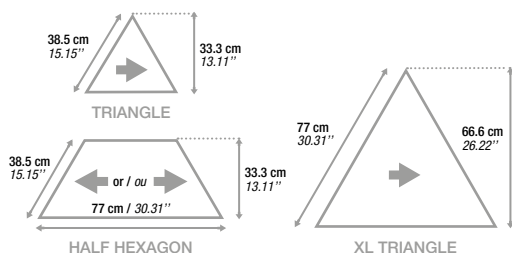
**TILES**  
50 X 50 cm / 19.69" X 19.69"



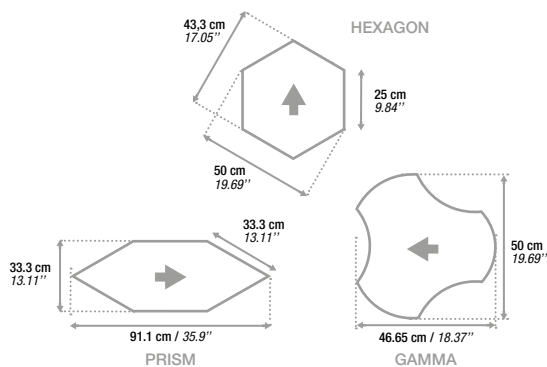
**XL PLANKS**  
50 X 100 cm  
19.69" X 39.37"



**PLANKS**  
25 X 100 cm  
9.84" X 39.37"



## NON COMBINABLE SHAPES



↑ Warp direction

[www.dicksonflooringproject.com](http://www.dicksonflooringproject.com)  
Your flooring configurator for all your projects



HALF HEXAGON

Mirage J548 Dusty Green & J522 Nimbus Beige



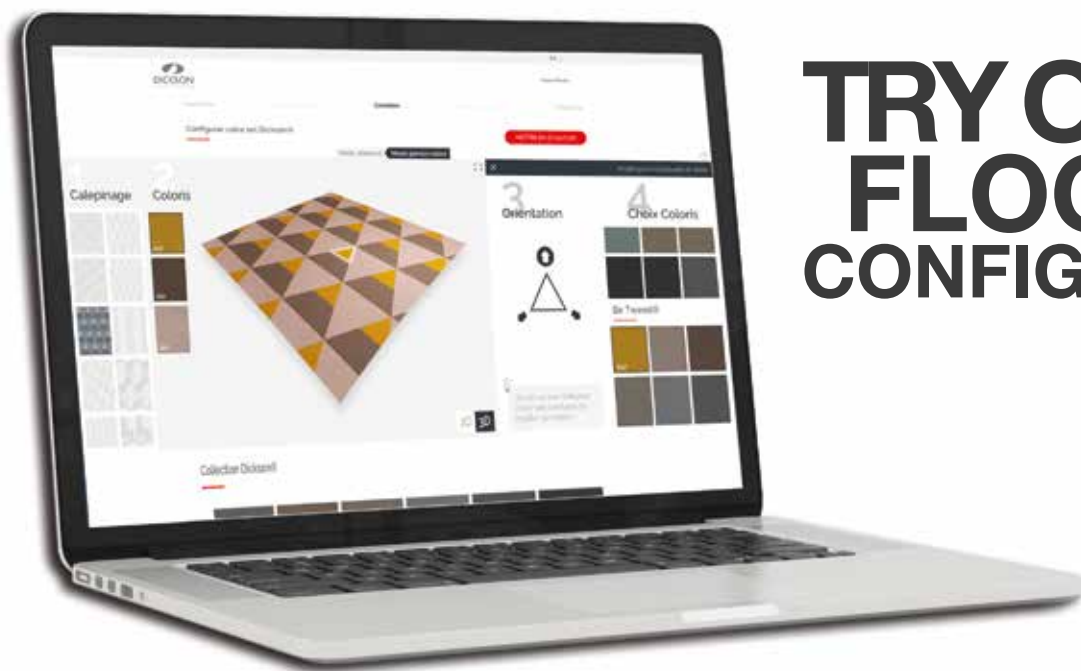
GAMMA

Écume J543 Vertigo Blue & J544 Diamond Blue

Our Dickson flooring is composed of PVC-coated woven polyester monofilaments joined to a technically advanced soundproofing underlayer by heat setting and coating. Heat action, central to our production process, fuses each element of our product together for advanced wear resistance and perfect dimensional stability. A subtle amalgam of polymers is discernable on the wear side, but does not alter the quality of our product.

The woven structure also gives added character to the flooring surface and naturally plays with the light. The shape, color and layout give your flooring depth and subtle nuances of color depending on your perspective and the intensity of the light.





# TRY OUT THE FLOORING CONFIGURATOR !

[www.dicksonflooringproject.com](http://www.dicksonflooringproject.com)

Each room raises new challenges. That's why our

## CONFIGURATOR ALLOWS UNPRECEDENTED SCOPE FOR TESTING AND MODULATING FLOOR SURFACES

From offices to hotels to homes, each space is unique, and so are your design choices. Now available to order in multiple shapes, Dickson Woven Flooring offers countless layout possibilities. Free yourself from standard layouts or complement them by mixing references and shapes to create rhythm, perspectives and reflections to transform interiors.

Allow your imagination free rein by playing with lighting, textures and reflections. With our ranges and their palette of unique colours to choose from, create your own rules and transform your flooring into a design feature.

Your floor becomes

**A FORM OF CREATIVITY,  
FLOORING AN ART FORM.**

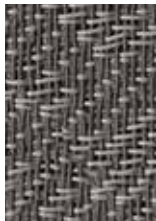
JET BLACK J511



MARRON BLACK J512



SKY SILVER J513

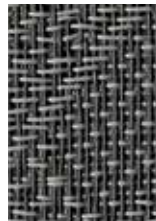


STRONSAY BEIGE J538

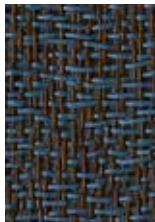


## — COSMOS

TUNGSTEN SILVER J509



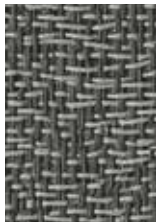
BOWLAND BLUE J519



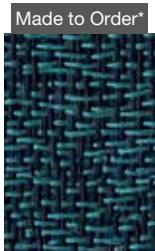
KOPI BRONZE J520



XENON GREY J521



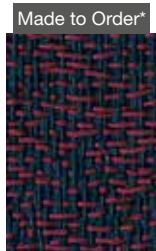
VERTIGO BLUE J543



DIAMOND BLUE J544



CHEVIOT RED J545



MAHOGANY J546



ARDEN GREEN J530



SMOKE J531



STONE J532



ISLAY BLUE J533



ALMOND GREEN J551



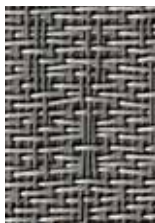
PACIFICA BLUE J552



PEARL BROWN J553



IRIDIUM SILVER J514



ZAFFRE BLUE J515



CERAMIC GREY J516



SNOW SHADOW J517



CUMBERLAND BEIGE J518



CELADON GREEN J539



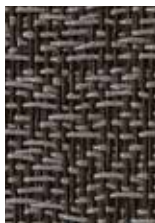
ORKNEY TAUPE J540



MERLOT RED J529



WILD EARTH J525



SILICON SILVER J523



NIMBUS BEIGE J522



ARIZONA BRONZE J526



STORNAWAY SILVER J524



RANNOCH ROSE J550



ANTRIM BLUE J549



VIPER BLUE J528



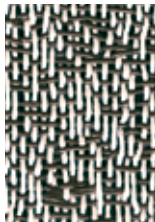
DUSTY GREEN J548



POLAR J558



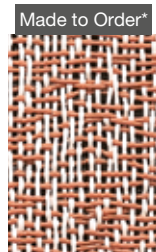
BETULA J559



MOON J557



SERANDITE J561

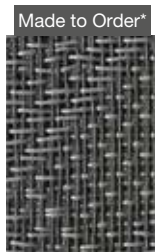




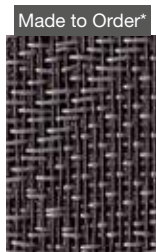
# WOVENFLOORING

BY DICKSON®

## — EMPREINTE



TITANIUM SILVER J537



SELENE BRONZE J536



PENNINE GREY J510

## — ÉCUME

## — ÉLÉGANCE

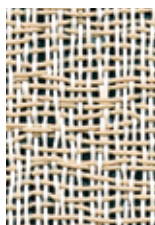
## — ALLURE



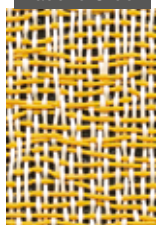
CALDERA ROSE J542



YELLOW TAUPE J541



SHELL J554



ORPIMENT J560



PERSIAN YELLOW J547

## — MIRAGE



UMBER J556



CHAMPAGNE BEIGE J527



SEPIA J555

\* This colour is made to order - minimum of order 200 m²

# WOVEN FLOORING




















BY DICKSON®

## TECHNICAL INFORMATION

**CLEANGARD®**  
INTEGRATED PROTECTION  
by DICKSON

**FRAYGUARD®**  
CLEAN CUT  
by DICKSON

**SOUNDGUARD®**  
ACOUSTIC INSULATION  
by DICKSON

	STANDARD	ALLURE, COSMOS, ECUME, ELEGANCE, EMPREINTE, MIRAGE
 Use classification	EN ISO 10874 ASTM D 5252	33 Heavy Commercial 5/5
 Fire classification	EN 13501-4 ASTM E 648 ASTM D2859	Cfl s1 1st Class Methamine Pill Test - CSPC FF1-70: pass
Optical smoke density	ASTM E 662	< 450
 Soundproofing	ISO 10140-3 ASTM E 492	18 dB IIC 59
 Sound absorption coefficient $\alpha_w$	EN ISO 354	0,05
 Roll width	EN 426	200 cm / 78,74"
 Roll length	EN ISO 24341	25 m / 9,84"
 Tile packaging and size	EN 994	50 x 50 cm - 19,69 x 19,69" Box of 16 tiles (4 sq.m. / 43,06 sq ft)
 Thickness*	ISO 1765	4 mm / 0,157"
 Weight	ISO 8543	3,55 kg/m² / 84,24 lb/ft²
Natural distortion**		Maximum 2%
 Castor chair	EN 985-A	Intensive use
 Body voltage	ISO 6356	< 2 kv
 Residual indentation	EN ISO 24343-1 ASTM F 914	< 0,2 mm / < 0,08" 0,18 mm / 0,007"
Static load	ASTM F970	Conform 250 Psi
Compression recovery		95%
 Fraying	EN 1815	Frayproof
 Thermal resistance	ISO 8302	Suitable for underfloor heating
 Dimensional stability	ISO 2551	< 0,1%
 Colour fastness to light	ISO 105 B02 AATCC 16 E	8/8 5/5
Colour fastness to weather	ISO 105 B04	5/5
 Slip resistance dry (dynamic coefficient of friction)	EN 13893 ASTM C 1028	$\mu > 0,3$ 0,81
 Slip resistance wet (ramp test with oil)	DIN 51130 ASTM C 1028	R9 0,61
 CE Certification	EN 14 041	0493-CPD-0101
Floorscore Certification (rolls + tiles)	SCS-EC10.2-2007	SCS - FS - 02719
LEED®	This product can help you earn points within the framework of Leed version 4 and meet the requirements regarding indoor environmental quality: low-emitting materials	

According to EN 1307 standard

\* All our ranges can be combined together for your projects. A slight difference in thickness, due to the different structures of the woven side, is possible and cannot exceed 0.6 mm.


\*\* Dickson flooring is a textile product, composed on the surface of warp threads aligned and associated with weft threads, by the weaving technique. The perfect perpendicularity of the warp and weft threads does not exist. Therefore, woven vinyl floors will always present natural warp and/or weft deformations that will accentuate the authentic appearance of the weave. Recognizing that this natural phenomenon can alter the final aesthetic result beyond a certain limit, Dickson has set a tolerance for all of its woven flooring lines. Weft deformation: Dickson Flooring tolerance limit = 2%. Visual aspect: our Dickson flooring is composed of a weave of PVC-coated polyester monofilaments combined with an acoustic and technical undercoat by heat-setting and coating. The action of heat, at the heart of our production process, allows the different elements of our products to melt together, thus ensuring their resistance to wear and tear and perfect dimensional stability. Thus, the discrete amalgam of polymers can be detected on the wear side without altering the quality of our products in any way. In addition, the woven structure adds character to the look of your flooring and naturally plays with the light. Varying with the shape, colour and layout pattern, the deep and subtle hues of your flooring change according to the lighting and perspective.

**DICKSON®**  
woven flooring







Regulation or protocol	Conclusion	Version of regulation or protocol
French VOC Regulation		Regulation of March and May 2011 (DEVL1101903D and DEVL1104875A)
French CMR components	Pass	Regulation of April and May 2009 (DEVP0908633A and DEVP0910046A)
Italian CAM	Pass	Decree 11 January 2017 (GU n.23 del 28-1-2017)
AgBB/ABG	Pass	Anforderungen an bauliche Anlagen bezüglich des Gesundheitsschutzes (ABG), Entwurf 31.08.2017
Belgian Regulation	Pass	Royal decree of May 2015 (C-2014/24239)
Indoor Air Comfort®	Pass	Indoor Air Comfort 6.0 of February 2017
Formaldehyde Emission Class	E1	EN 16516
Blue Angel (RAL UZ 120)	Pass	Resilient Floor Covering, February 2011
BREEAM International	Compliant	GN22 v2.3 (March 2018): BREEAM Recognised Schemes for VOC Emissions from Building Products
LEED v4 (outside U.S.)	Compliant	LEED v4 for Building Design and Construction (April, 2015)
BREEAM® NOR	Pass	BREEAM-NOR New Construction v1.1 (May 2017)



# WOVENFLOORING

BY DICKSON®

[www.dickson-constant.com](http://www.dickson-constant.com)  
[www.dicksonflooringproject.com](http://www.dicksonflooringproject.com)



**DICKSON PARTNER**

[www.primapavimenti.it/pavimenti-dickson-en](http://www.primapavimenti.it/pavimenti-dickson-en)

